

Instant Wireless™ Series Wireless USB Network Adapter

Model No.: WUSB11 (ver 2.5)

Connecting The Wireless USB Network Adapter to Your PC

Note: Do not click **Cancel** or **Skip** at any time during the installation. Doing so will prevent the driver from being properly installed on your PC. This document assumes that your CD-Rom drive is letter D and that you are running Windows XP in the Default mode.

The Wireless USB Network Adapter comes with one USB cable. One end of the USB cable has a rectangular Type A connector. The other end of the cable has a square Type B connector.

To install the Wireless USB Network Adapter, first connect the Type B end of the USB cable to the Wireless USB Adapter's USB port. Then connect the Type A end of the USB cable to your computer's USB port.

The Wireless USB Network Adapter gets its power from the PC's USB port so that no power adapter is needed. The Power LED should light up green when the Wireless USB Network Adapter is attached and the PC is on.

After the Wireless USB Network Adapter has been physically connected to your computer, Windows will detect the new hardware.

Installing The Wireless USB Network Adapter Software

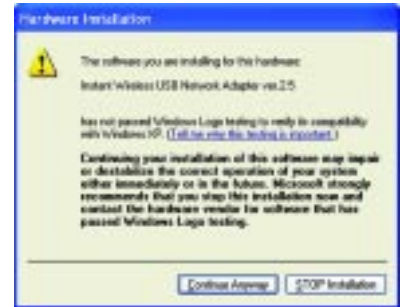
1. Start your PC.
2. The *Found New Hardware Wizard* screen will appear. If it does not, bring up the System Properties window. (One way to do this is to press the Windows and Pause/Break keys simultaneously.) Then, click the **Hardware** tab. Click the **Device Manager**. Under "Other Devices", double-click **USB Device**. Then, click on the **Driver** tab and click **Update Driver**.
3. Click the **Install from a list or specific location (Advanced)** radio button and click **Next**.
4. Insert the Setup Utility CD into your CD-ROM drive. (If a Linksys Utility screen appears, click the **Exit** tab.) The *Please Choose Your Search and Installation Options* dialog box will appear.

Quick Installation for Windows XP

This sheet will guide you through the basic steps needed to install the Wireless USB Network Adapter onto your network.

5. Click the **Search for the best driver in these locations** radio button. Deselect the **Search removable media (floppy, CD-ROM...)** check box. (Note: If you do not deselect this option, Windows may find multiple drivers.) Select the **Include this location in the search:** check box. Enter **D:\winxp** in the field and click **Next**.

6. When the *Hardware Installation* field appears, click **Continue Anyway**. If asked to upgrade firmware, click **OK**. If an error message appears, click **OK** again, as the firmware does not require upgrading.



7. The *Completing the Found New Hardware Wizard* dialog box will appear. Click **Finish**.



Installation is complete. For information on using your PC with your network, refer to the User Guide.

Connecting to Your Wireless Network

1. Right-click the **Network** icon in your PC's System Tray.



2. Left-click **View Available Wireless Networks**. This will open the "Connect to Wireless Network" window. In the "Available Networks" section, highlight the desired wireless network by clicking its name (also called the SSID). Then, click **Connect**. No wireless device will be displayed if there is no active device on the network.

For more information about WEP, refer to the Router's User Guide or the KnowledgeBase on the Linksys Website.

For further information on Wireless Networking with Windows XP, search the Windows XP Search Engine using the keyword: "wireless".